

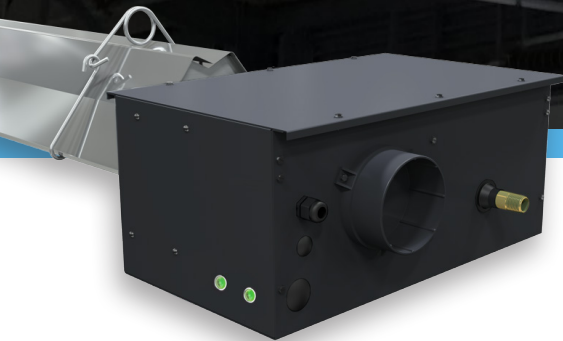
ST2 SERIES

TWO-STAGE, ECONOMICAL INFRARED TUBE HEATER



Optimal Fuel and Comfort Benefits with Unsurpassed Features

Streamlined for economy and designed without sacrificing performance, the ST2 Series is a quality, energy efficient heater at a more economical price. Our patented two-stage technology, incorporated into the ST2 Series, provides more comfort while saving valuable energy dollars. Utilizing a direct spark ignition system and hot-rolled steel emitter tubes, this series is the best in this class of equipment.



BENEFITS OF HEATING WITH INFRARED

- Superior Comfort
- Indoor Air Quality
- Reduced Energy Consumption
- Flexibility
- Durability
- Radiant Efficiency

PRODUCT FEATURES

- 100% aluminized steel tubes with .95 emissive coating
- Pre-purge controls
- Operational indicator lights included
- Separated air and gas burner
- Fitted ABS plastic air intake collar
- Reliable hot surface ignition
- Type 1 rubber flexible gas connector included
- 120 volt controls and power cord standard

ST2 SERIES

TWO-STAGE, ECONOMICAL INFRARED TUBE HEATER

PRODUCT SPECIFICATIONS



Input Range:
65,000 to 200,000 BTU/h



Radiant Tubes:
.95 Emissive Black Coated Aluminized Steel



Lengths:
20-ft. to 60-ft.



Certification:
CSA



Gas Type:
Natural (3.5" W.C.) or Propane (10.0" W.C.)



Limited Warranty:
1 (Components) - 2 (Tubes) - 3 (Burner)



Combustion Chamber:
4" Titanium Stabilized or Aluminized Steel



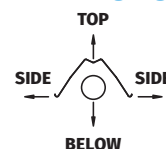
Electrical:
120V, 60 Hz. 3-wire
Amps: 4.8 Starting, 1.1 Running

AVAILABLE ST2 MODELS & CLEARANCES

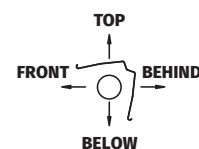
MODEL #	GAS ¹	BTU/h INPUT	LENGTH	WEIGHT	MOUNTING HEIGHTS ²	MOUNTING ANGLE	SIDE	TOP	BELOW
ST2-20-65	Nat or Prop	65,000	21'-9"	120 lbs	9' to 14'	0°	9	6	60
ST2-20-75	Nat or Prop	75,000	21'-9"	120 lbs	10' to 15'	0°	9	6	60
ST2-30-65	Nat or Prop	65,000	31'-5"	160 lbs	10' to 15'	0°	9	6	60
ST2-30-75	Nat or Prop	75,000	31'-5"	160 lbs	11' to 18'	0°	9	6	60
ST2-30-100	Nat or Prop	100,000	31'-5"	160 lbs	12' to 20'	0°	14	6	66
ST2-40-65	Nat or Prop	65,000	41'-1"	190 lbs	11' to 18'	0°	9	6	60
ST2-40-75	Nat or Prop	75,000	41'-1"	190 lbs	11' to 18'	0°	9	6	60
ST2-40-100	Nat or Prop	100,000	41'-1"	190 lbs	12' to 20'	0°	14	6	66
ST2-40-125	Nat or Prop	125,000	41'-1"	190 lbs	13' to 23'	0°	20	6	76
ST2-40-150	Nat or Prop	150,000	41'-1"	190 lbs	14' to 25'	0°	24	6	81
ST2-50-125	Nat or Prop	125,000	50'-9"	235 lbs	15' to 27'	0°	20	6	76
ST2-50-150	Nat or Prop	150,000	50'-9"	235 lbs	15' to 27'	0°	24	6	81
ST2-50-175	Nat or Prop	175,000	50'-9"	235 lbs	16' to 30'	0°	34	6	92
ST2-50-200	Nat or Prop	200,000	50'-9"	235 lbs	17' to 35'	0°	41	6	94
ST2-60-150	Nat or Prop	150,000	60'-5"	265 lbs	16' to 30'	0°	24	6	81
ST2-60-175	Nat or Prop	175,000	60'-5"	265 lbs	16' to 30'	0°	34	6	92
ST2-60-200	Nat or Prop	200,000	60'-5"	265 lbs	17' to 35'	0°	41	6	94

CLEARANCES TO COMBUSTIBLES³ (INCHES)

0° Mounting Angle



45° Mounting Angle³



- ¹ Specify natural (Nat) or propane (Prop) gas.
² Factory recommended mounting heights are provided as a guideline. Actual conditions may dictate variations from the above data.
³ Refer to ST2 Manual for additional information about clearances for 45° Mounting Angle, 0° w/ 1 Side Shield, 0° w/ 2 Side Shields, and 20 ft. from burner.

[^]Stainless steel tube upgrades available.

Always maintain the published clearances to combustibles. Not for residential use. Clearances published in ST2 Series manual and on warning label supersede data shown on this brochure.



BRANT RADIANT
HEATERS LIMITED

34 Scott Ave., Paris, Ontario N3L3R1 Canada
+1.519.442.7823 | sales@brantradiant.com

www.BRANTRADIANT.com



Form No. LBST2-0318

