

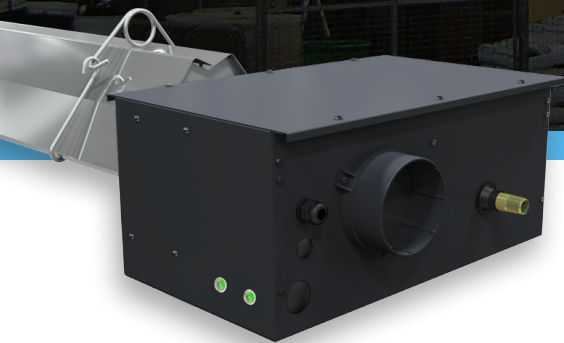
# DX2 SERIES

## PREMIER, SINGLE-STAGE LOW INTENSITY TUBE HEATER



### Optimal Fuel and Comfort Benefits with Unsurpassed Features

Packed with quality features, the DX2 represents the highest in quality, single-stage, low intensity tube heaters. Performance is enhanced through the use of a specially designed stainless steel burner and black coated titanium stabilized and/or aluminized coated steel radiant tube exchangers. The DX2 Series offers superior low intensity heat, performance, and longevity.



### BENEFITS OF HEATING WITH INFRARED

- Superior Comfort
- Indoor Air Quality
- Reduced Energy Consumption
- Flexibility
- Durability
- Radiant Efficiency

### PRODUCT FEATURES

- 100% aluminized steel tubes with .95 emissive coating
- Pre-purge controls
- Operational indicator lights included
- Separated air and gas burner
- Fitted ABS plastic air intake collar
- Reliable hot surface ignition
- Type 1 rubber flexible gas connector included
- 120 volt controls and power cord standard

# DX2 SERIES

## PREMIER, SINGLE-STAGE LOW INTENSITY TUBE HEATER

### PRODUCT SPECIFICATIONS



**Input Range:**  
50,000 to 200,000 BTU/h



**Lengths:**  
20-ft. to 80-ft.



**Gas Type:**  
Natural (3.5" W.C.) or Propane (10.0" W.C.)



**Combustion Chamber:**  
4" Titanium Stabilized or Aluminized Steel



**Radiant Tubes:**  
.95 Emissive Black Coated Aluminized Steel



**Certification:**  
CSA, IAS, Indoor, Outdoor



**Limited Warranty:**  
1 (Components) - 5 (Tubes) - 10 (Burner)



**Electrical:**  
120V, 60 Hz. 3-wire  
Amps: 4.8 Starting, 1.1 Running

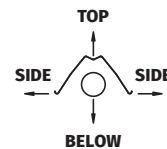


### AVAILABLE DX2 MODELS & CLEARANCES

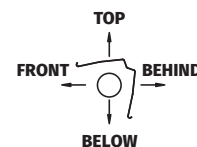
MODEL #	GAS <sup>1</sup>	BTU/h INPUT	LENGTH	WEIGHT	MOUNTING HEIGHTS <sup>2</sup>	MOUNTING ANGLE	SIDE	TOP	BELOW
DX2-20-50	Nat or Prop	50,000	21'-8"	120 lbs	9' to 15'	0°	9	6	47
DX2-20-60	Nat or Prop	60,000	21'-8"	120 lbs	10' to 15'	0°	9	6	47
DX2-20-75 <sup>^</sup>	Nat or Prop	75,000	21'-8"	120 lbs	11' to 18'	0°	9	6	60
DX2-20-80	Nat or Prop	80,000	21'-8"	120 lbs	8' to 14'	0°	14	6	66
DX2-30-50	Nat or Prop	50,000	31'-4"	160 lbs	10' to 15'	0°	9	6	47
DX2-30-60	Nat or Prop	60,000	31'-4"	160 lbs	11' to 18'	0°	9	6	47
DX2-30-75 <sup>^</sup>	Nat or Prop	75,000	31'-4"	160 lbs	12' to 20'	0°	9	6	60
DX2-30-80	Nat or Prop	80,000	31'-4"	160 lbs	8' to 14'	0°	14	6	66
DX2-30-100 <sup>^</sup>	Nat or Prop	100,000	31'-4"	160 lbs	13' to 23'	0°	14	6	66
DX2-30-125	Nat or Prop	125,000	31'-4"	160 lbs	14' to 25'	0°	20	6	76
DX2-40-50	Nat or Prop	50,000	41'-0"	190 lbs	11' to 18'	0°	9	6	47
DX2-40-60	Nat or Prop	60,000	41'-0"	190 lbs	11' to 18'	0°	9	6	47
DX2-40-75 <sup>^</sup>	Nat or Prop	75,000	41'-0"	190 lbs	12' to 20'	0°	9	6	60
DX2-40-80	Nat or Prop	80,000	41'-0"	190 lbs	8' to 14'	0°	14	6	66
DX2-40-100 <sup>^</sup>	Nat or Prop	100,000	41'-0"	190 lbs	13' to 23'	0°	14	6	66
DX2-40-125 <sup>^</sup>	Nat or Prop	125,000	41'-0"	190 lbs	14' to 25'	0°	20	6	76
DX2-40-150 <sup>^</sup>	Nat or Prop	150,000	41'-0"	190 lbs	15' to 27'	0°	24	6	81
DX2-40-175	Nat or Prop	175,000	41'-0"	190 lbs	16' to 30'	0°	34	6	92
DX2-50-100 <sup>^</sup>	Nat or Prop	100,000	50'-8"	235 lbs	15' to 27'	0°	14	6	66
DX2-50-125 <sup>^</sup>	Nat or Prop	125,000	50'-8"	235 lbs	15' to 27'	0°	20	6	76
DX2-50-150 <sup>^</sup>	Nat or Prop	150,000	50'-8"	235 lbs	16' to 30'	0°	24	6	81
DX2-50-175 <sup>^</sup>	Nat or Prop	175,000	50'-8"	235 lbs	17' to 35'	0°	34	6	92
DX2-50-200	Nat or Prop	200,000	50'-8"	235 lbs	18' to 40'	0°	41	6	94
DX2-60-125	Nat or Prop	125,000	60'-4"	265 lbs	16' to 30'	0°	20	6	76
DX2-60-150 <sup>^</sup>	Nat or Prop	150,000	60'-4"	265 lbs	17' to 35'	0°	24	6	81
DX2-60-175 <sup>^</sup>	Nat or Prop	175,000	60'-4"	265 lbs	17' to 35'	0°	34	6	92
DX2-60-200 <sup>^</sup>	Nat or Prop	200,000	60'-4"	265 lbs	18' to 40'	0°	41	6	94
DX2-70-175	Nat or Prop	175,000	70'-0"	300 lbs	19' to 42'	0°	34	6	92
DX2-70-200	Nat or Prop	200,000	70'-0"	300 lbs	19' to 42'	0°	41	6	94
DX2-80-200	Nat or Prop	200,000	79'-8"	330 lbs	20' to 45'	0°	41	6	94

CLEARANCES TO COMBUSTIBLES<sup>3</sup> (INCHES)

#### 0° Mounting Angle



#### 45° Mounting Angle<sup>3</sup>



- <sup>1</sup> Specify natural (Nat) or propane (Prop) gas.
  - <sup>2</sup> Factory recommended mounting heights are provided as a guideline. Actual conditions may dictate variations from the above data.
  - <sup>3</sup> Refer to DX2 Manual for additional information about clearances for 45° Mounting Angle, 0° w/ 1 Side Shield, 0° w/ 2 Side Shields, and 20 ft. from burner.
- <sup>^</sup>Stainless steel tube upgrades available.

Always maintain the published clearances to combustibles. Not for residential use. Clearances published in DX2 Series manual and on warning label supersede data shown on this brochure.



**BRANT RADIANT**  
HEATERS LIMITED

34 Scott Ave., Paris, Ontario N3L3R1 Canada  
+1.519.442.7823 | sales@brantradiant.com

[www.BRANTRADIANT.com](http://www.BRANTRADIANT.com)



Form No. LBDX2-1123

