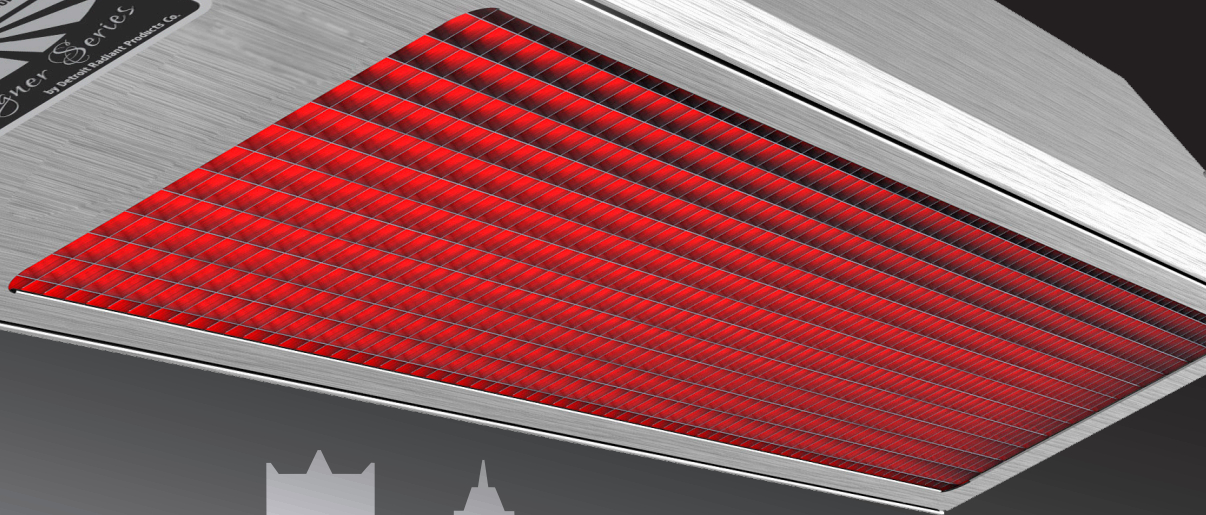


RE-VERBER-RAY®



BRANTRADIANT.COM

CONTENTS



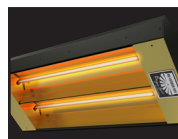
- 6 DSCS Series Gas-Fired High-Intensity Infrared Patio Heater**



- 12 DGS Series Filtered Short-Wave Electric Infrared Heater**



- 8 DST Series Gas-Fired Low-Intensity Infrared Patio Heater**



- 14 MW Series Medium-Wave Electric Infrared Heater**



- 10 SW Series Short-Wave Electric Infrared Heater**



- 16 Heater Specifications**

Guide to Selecting the Right Outdoor Heater

Excessive Air Movement – Wind or light breezes are perhaps the largest variable when trying to achieve comfortable heating in an outdoor or spot-heating environment. Using barricades such as wind curtains are highly recommended whenever possible.

Mounting Heights – Traditionally, outdoor or spot heating requires the heating equipment to be mounted lower or closer to the people enjoying the heat. Lowering the equipment may result in less coverage but will offer a more focused heat pattern to the desired area. The final mounting height of the heater may need to be adjusted to achieve the results desired by the customer.

Customer Expectations – Depending on the needs of the customer, more or fewer heaters may be required for a given application. There is rarely a “one size fits all” solution to properly size an outdoor or spot-heating application. Some customers may seek maximum comfort in extreme conditions while others may be looking to take the chill off for short exposure periods, such as a designated smoking area.



Look to the Experts in Outdoor Heating!



Since 1965, Brant Radiant Heaters Limited has been setting the standard for high-quality, cost-effective, energy-efficient infrared heaters. RE-VERBER-RAY® brand products are recognized as a solution for most commercial, industrial, and specialty applications. Our manufacturing flexibility and efficiencies are a key element in providing optimal customer service and application-specific heating solutions.

Stylish and easy to install, the Designer Series offering by RE-VERBER-RAY has been designed specifically to add warmth to outdoor environments. Whether you are looking to extend your local season, have a designated smoking area, or need to make additional room for peak crowds, the Designer Series' broad offering can provide a solution that will fit your outdoor heating needs.

Product Feature Key



Water Resistant



Adjustable Mounting



Recess Option



Outdoor Approved



Visible Light



Even Heat Distribution



Wind Resistant



Intense Heat Output

DSCS SERIES PATIO HEATER

Designed to add warmth to outdoor patio applications, the Designer Series infrared patio heater is the perfect solution to stylishly extend the outdoor season for many commercial and residential applications.



DSCS Series Gas-Fired High-Intensity Infrared Patio Heater

Specifically designed for comfort, reliability and ease of installation, the DSCS Series high-intensity patio heater is designed to provide outdoor comfort heating. Mounted out of the way, without the hassle of refilling costly propane tanks, this infrared patio heater is an ideal solution to stylishly extend the

outdoor season for many commercial and residential applications, such as restaurant patios and outdoor living spaces. Features include an exclusive and durable stainless-steel decorative grille, choice of housing materials and input options, making this heater an excellent solution for your outdoor heating needs.



Available in propane and natural gas

Key Features

- Decorative stainless egg crate grille.
- Wind- and rain-protected design.
- Reliable direct-spark ignition.
- Available in two BTU inputs.
- Even level of heat distribution.
- Versatile mounting options.
- Black-coated aluminized or brushed stainless housing.

Available BTU Range

BTU/h	Gas Type
31,000	Natural
31,000	Propane
34,000	Natural



DST SERIES PATIO HEATER

The Designer Series Tube heater combines application flexibility with a chic, modern design. This low-intensity tube heater is specifically designed for comfort, reliability and ease of installation to deliver the desired amount of warmth across a vast number of hard-to-heat applications.



DST SERIES PATIO HEATER

DST Series Gas-Fired Low-Intensity Infrared Patio Heater

The DST Series is a top-of-the-line patio heater with an aesthetically pleasing, modern design featuring our patented two-stage technology. This Series heater was manufactured specifically with the outdoor market in mind. Not only does this heater deliver an even heat pattern throughout its 10-foot span, but

it also comes equipped with a smart LED self-diagnostic light and a decorative, modular grille. Certified for indoor[†] and outdoor commercial applications as well as outdoor residential applications, the DST Series patio heater is an excellent choice for heating a wide variety of applications.



Available in propane and natural gas

Key Features

- Highly decorative stainless housing.
- 3/4" decorative modular grille.
- Smart LED self-diagnostic light.
- 30 linear feet of radiant tube in a 10-foot span.
- Unified Control Panel with Easy Access and Serviceability.

Available BTU Range

BTU/h	Gas Type
60,000 High Fire; 40,000 Low Fire	Natural
60,000 High Fire; 50,000 Low Fire	Propane
80,000 High Fire; 50,000 Low Fire	Natural

[†]80,000 model is not certified for indoor commercial applications.



SW SERIES ELECTRIC HEATER

SW Series heaters produce both infrared heat and visible light energy. Short-wave electric lamps produce infrared heat energy and are encased in a compact, aesthetically pleasing enclosure to complement most indoor or outdoor environments.

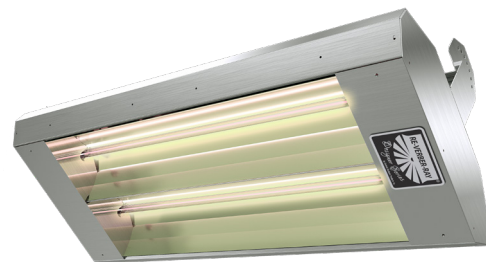


SW SERIES ELECTRIC HEATER

SW Series (Short-Wave) Electric Infrared Heater

The SW Series produces short-wave infrared heat that is well suited for use in spot heating applications. Short-wave infrared has the ability to emit both infrared heat and visible light energy, which can be beneficial in many applications: hotels, valet parking, bus

stations, parking garages, and airport entrances. Offered in single, dual or triple lamp options and a choice of clear or glare-reducing ruby lamps, this series can be easily customized to match your heating needs in a wide variety of indoor or outdoor commercial applications.



Models range from 1,600 to 11,400 watts.

Key Features

- Gold-colored anodized aluminum reflectors reduce glare.
- Single, double or triple lamp models.
- Clear or glare-reducing ruby lamps.
- 0° to 45° adjustable mounting brackets included.
- Black powder-coated or brushed stainless-steel housing.
- Compact, aesthetic design.



DGS SERIES ELECTRIC HEATER

DGS Series heaters produce filtered short-wave infrared heat. A custom designed reflector helps create the intense heat output needed for a variety of outdoor applications. Constructed of aluminum, the DGS Series was built to handle harsh exterior conditions.



DGS SERIES ELECTRIC HEATER

DGS Series (Filtered Short-Wave) Electric Infrared Heater

The DGS Series has proven to be an excellent option for electric heating that values aesthetics with its modern design and high-end quality. This heater features a custom designed reflector that focuses the desired heat pattern to your space. Thanks to its aluminum extruded body, the DGS Series is

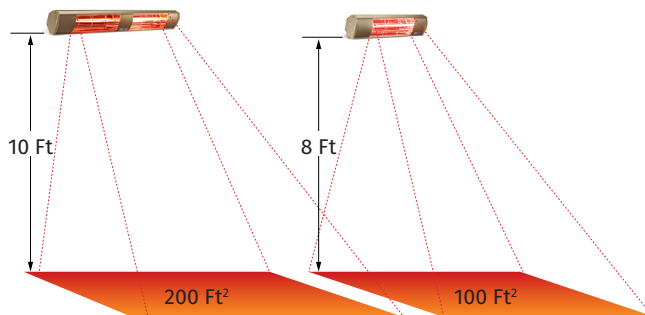
easily able to withstand harsh outdoor conditions, allowing you to extend your residential patio or outdoor restaurant season. Plus, its sleek appearance adds style to any indoor or outdoor space.



Available in 1,500, 2,000 and 3,000 watts.
All models have a bronze color finish with gold filtered red lamps.

Key Features

- Custom designed reflector.
- High-end quality and compact, aesthetic design.
- IP55 weatherproof.
- High-capacity range.



MW SERIES ELECTRIC HEATER

MW Series heaters are unique in their ability to produce infrared heat. The source of this energy comes from medium-wave electric lamps encased in an aesthetically pleasing enclosure. This heater offers an assortment of sizes, casings, and colors suitable for your application.

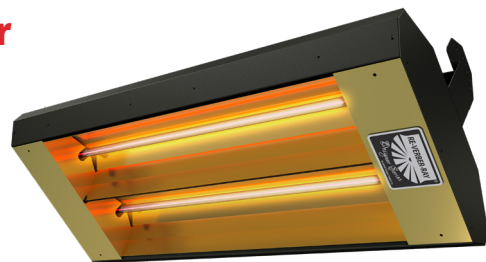


MW Series (Medium-Wave) Electric Infrared Heater

The MW Series features a sleek, compact enclosure capable of housing single, dual or triple lamp options that produce a wide, symmetrical heat pattern. Medium-wave infrared heat produced effectively heats the surrounding space. Subtle light is also emitted, making the MW Series suitable for applications such as romantic

restaurants or outdoor patios, where bright lighting is not desired.

With an assortment of casings, lamp sizes, voltages, and wattages, this heater can easily be customized to provide a practical solution for your needs.



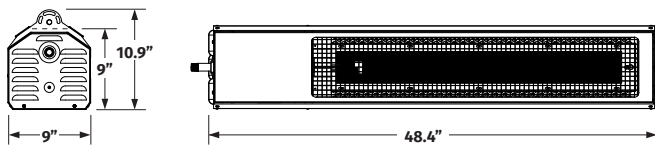
Models range from 750 to 9,000 watts.

Key Features

- Compact, aesthetic design.
- Gold-colored, anodized aluminum reflectors reduce glare.
- Single, double or triple lamp models.
- 0° to 45° adjustable mounting brackets included.
- Black powder-coated or brushed stainless-steel housing.

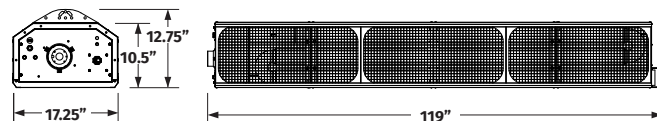


HEATER SPECIFICATIONS



DSCS Series High Intensity

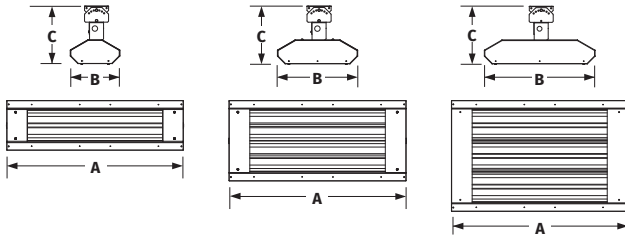
SPECIFICATIONS	DSCS-31	DSCS-34
Gas Type	Natural or Propane	Natural
Heat Input BTU/h	31,000	34,000
Voltage	24 VAC-60Hz	
Dimensions (LxWxH)	48.4"x9"x10.9"	
Weight	59 lbs.	
Recommended Mounting Height	8 ft. to 12 ft.	8.5 ft. to 13 ft.
Approx. Area Heated	64 sq. ft.	81 sq. ft.
Approvals	Outdoor Commercial Outdoor Residential	
Limited Warranty	5 years ceramic burner 1 year components	



DST Series Low Intensity

SPECIFICATIONS	DST-60	DST-80
Gas Type	Natural or Propane	Natural
Heat Input (BTU/h)	60,000 high fire 40,000 low fire (nat) 50,000 low fire (prop)	80,000 high fire 50,000 low fire
Voltage	120 VAC-60Hz	
Dimensions (LxWxH)	119"x17.25"x12.75"	
Recommended Mounting Height	8 ft. to 14 ft.	9 ft. to 15 ft.
Approx. Area Heated	240 sq. ft.	300 sq. ft.
Weight	170 lbs.	
Approvals	Outdoor Commercial Indoor Commercial Outdoor Residential	Outdoor Commercial Outdoor Residential
Limited Warranty	1 year components 3 years tubes 5 years burner	

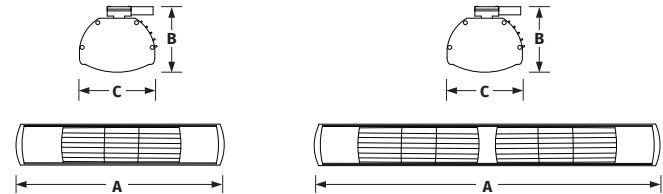
HEATER SPECIFICATIONS



SW Series Short Wave

SPECIFICATIONS	SW
Electrical Consumption	1,600 to 11,400 watts
Equivalent BTU	5,459 to 38,898 BTU/h
Voltage	120 to 575 VAC; 1Ph or 3Ph
Lamp Elements	Quartz
Recommended Mounting Height	8 ft. to 14 ft.
Weight	15 lbs. to 40 lbs.
Approvals	Outdoor Commercial Indoor Commercial
Limited Warranty	All components 1 year

Dimensions	A			B			C		
Lamp Qty.	1	2	3	1	2	3	1	2	3
SW-24	24.00"			9.25"	15.00"	20.75"	10.75"		
SW-33	33.00"			9.25"	15.00"	20.75"	10.75"		
SW-46	46.00"			9.25"	15.00"	20.75"	10.75"		

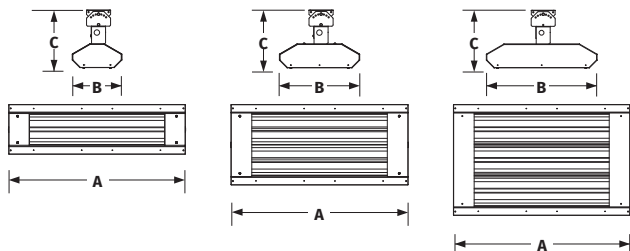


DGS Series Filtered Short Wave

SPECIFICATIONS	DGS-15	DGS-20	DGS-30
Electrical Consumption	1,500 watts	2,000 watts	3,000 watts
Equivalent BTU	5,118	6,824	10,236
Voltage	120 VAC	230 VAC	230 VAC
Lamp Elements	Quartz	Quartz	Quartz
Recommended Mounting Height	7 ft. to 9 ft.	7 ft. to 9 ft.	8 ft. to 10 ft.
Weight	5.7 lbs.	5.7 lbs.	9.7 lbs.
Approvals	Outdoor Commercial Indoor Commercial Outdoor Residential		
Limited Warranty	All components 1 year		

Dimensions	A	B	C
DGS-15	21.06"	4.61"	4.84"
DGS-20	21.06"	4.61"	4.84"
DGS-30	36.75"	4.61"	4.84"

HEATER SPECIFICATIONS



MW Series Medium Wave

SPECIFICATIONS

MW

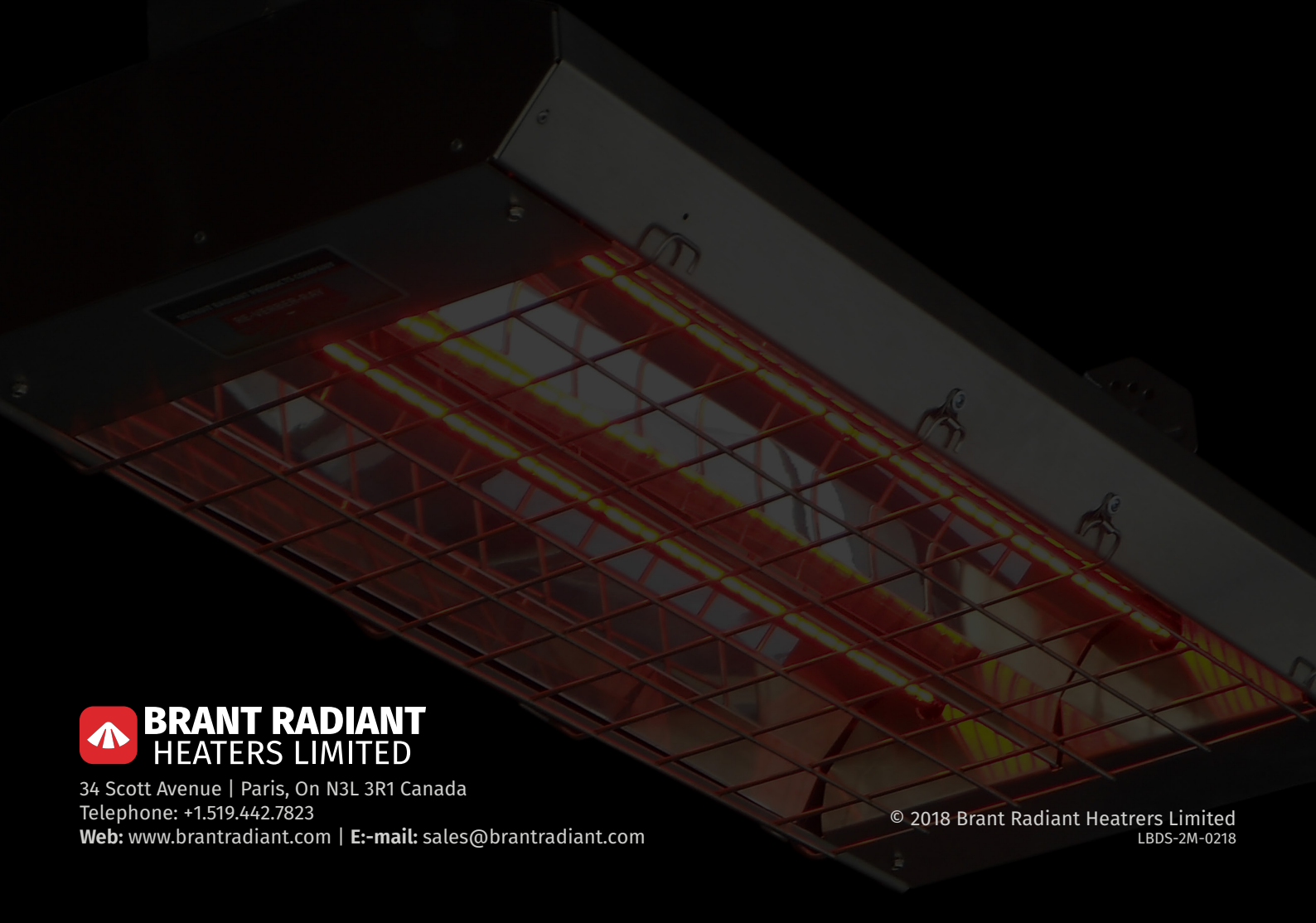
Electrical Consumption	750 to 9,000 watts
Equivalent BTU	2,559 to 30,709 BTU/h
Voltage	120 to 575 VAC; 1Ph or 3Ph
Lamp Elements	Quartz
Recommended Mounting Height	7 ft. to 15 ft.
Weight	15 lbs. to 40 lbs.
Approvals	Outdoor Commercial Indoor Commercial
Limited Warranty	All components 1 year

Dimensions	A			B			C		
Lamp Qty.	1	2	3	1	2	3	1	2	3
MW-24	24.00"			9.25"	15.00"	20.75"	10.75"		
MW-33	33.00"			9.25"	15.00"	20.75"	10.75"		
MW-46	46.00"			9.25"	15.00"	20.75"	10.75"		

NOTES:

This image shows a full page of handwriting practice paper. It contains ten identical rows of horizontal guidelines. Each row is composed of three lines: a solid black line at the top, a dashed black line in the middle, and another solid black line at the bottom. These lines are evenly spaced vertically across the entire page, providing a template for practicing letter formation and alignment.





**BRANT RADIANT
HEATERS LIMITED**

34 Scott Avenue | Paris, On N3L 3R1 Canada

Telephone: +1.519.442.7823

Web: www.brantradiant.com | E-mail: sales@brantradiant.com

© 2018 Brant Radiant Heaters Limited

LBDS-2M-0218