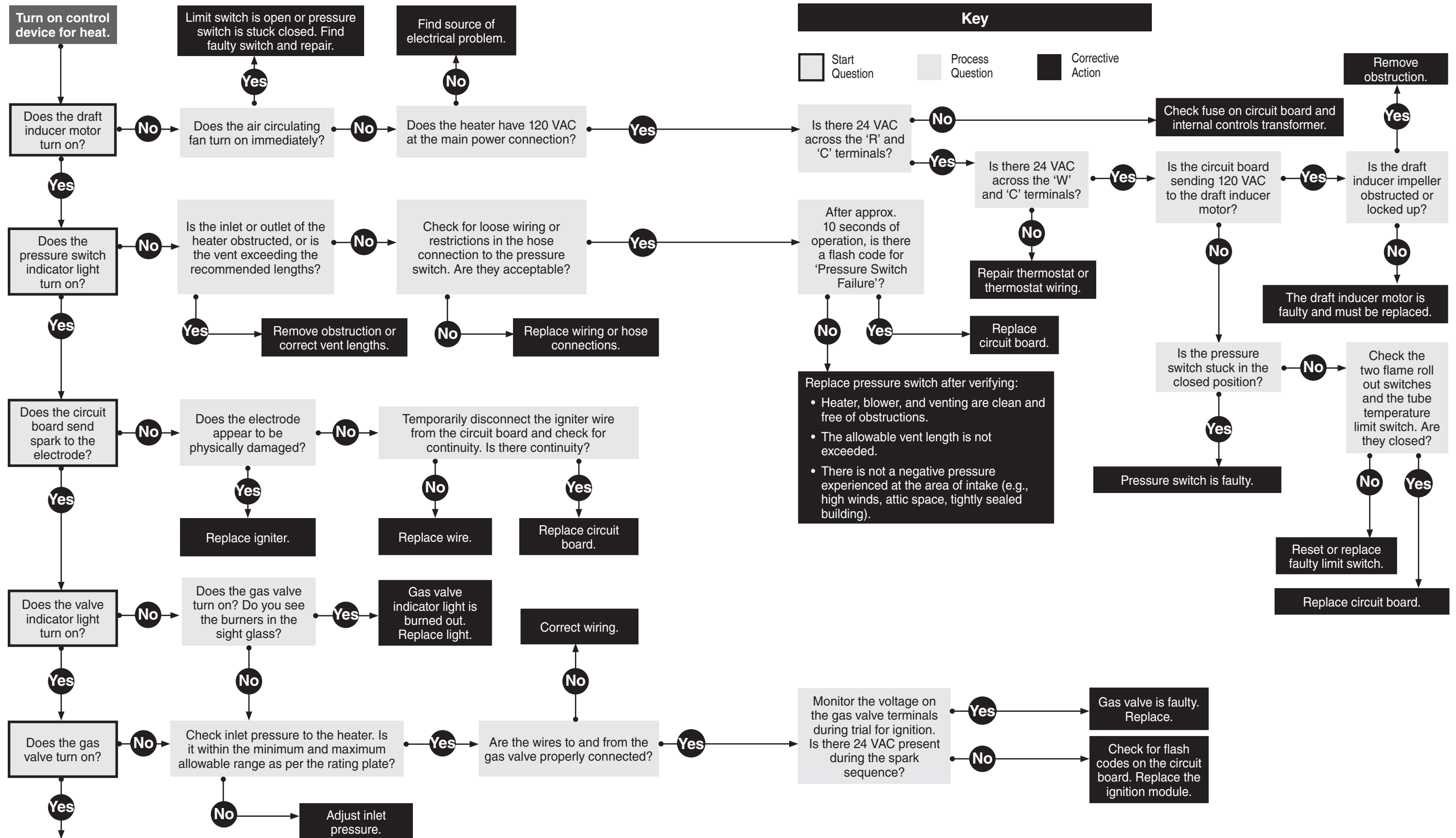


Troubleshooting Guide FA

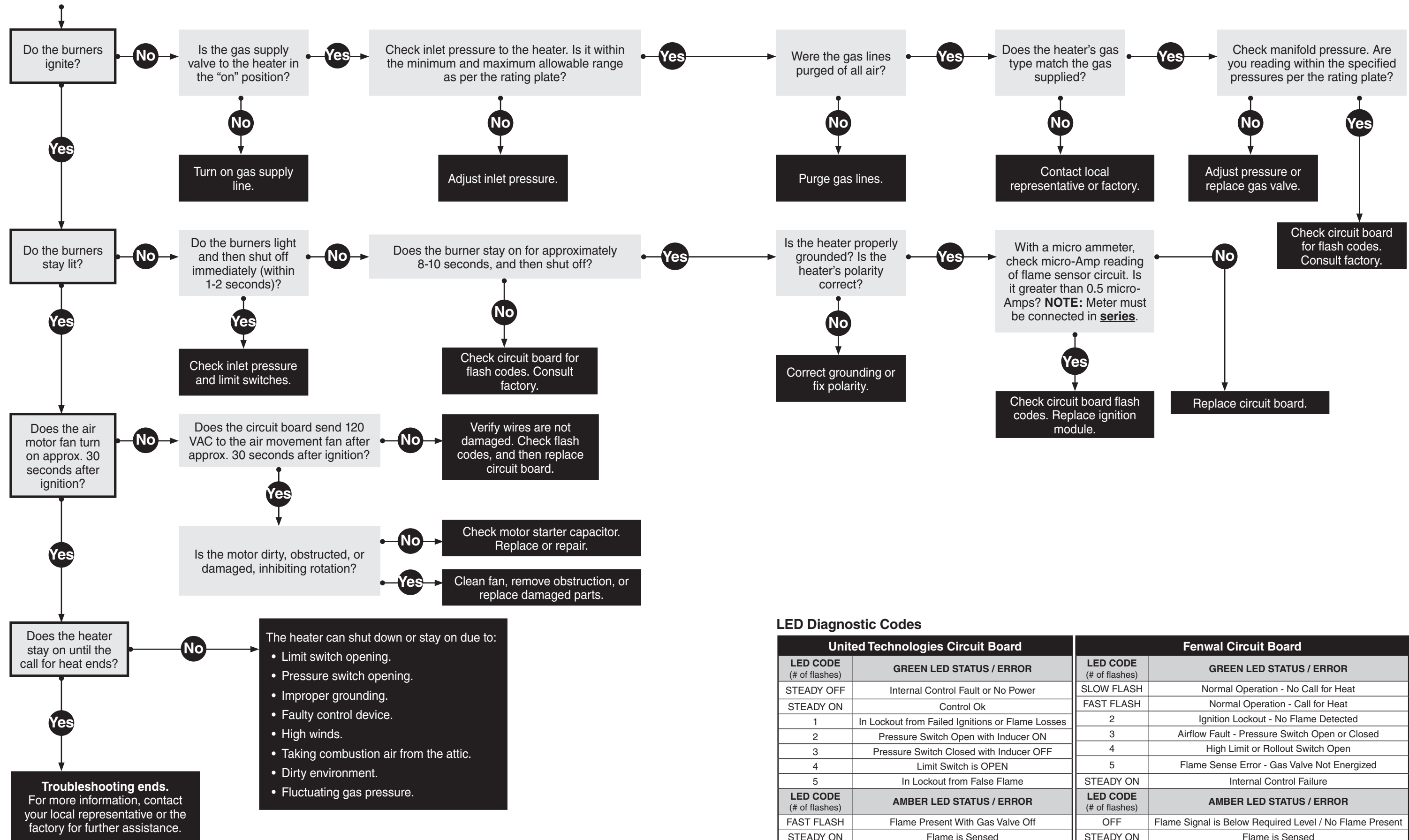
NOTICE

Bypassing any switch is intended for testing purposes only. Do not leave switch bypassed during normal operation or the heater's built-in safety mechanisms will be compromised.



Continued on page below.

Continued from page above.



LED Diagnostic Codes

United Technologies Circuit Board		Fenwal Circuit Board	
LED CODE (# of flashes)	GREEN LED STATUS / ERROR	LED CODE (# of flashes)	GREEN LED STATUS / ERROR
STEADY OFF	Internal Control Fault or No Power	SLOW FLASH	Normal Operation - No Call for Heat
STEADY ON	Control Ok	FAST FLASH	Normal Operation - Call for Heat
1	In Lockout from Failed Ignitions or Flame Losses	2	Ignition Lockout - No Flame Detected
2	Pressure Switch Open with Inducer ON	3	Airflow Fault - Pressure Switch Open or Closed
3	Pressure Switch Closed with Inducer OFF	4	High Limit or Rollout Switch Open
4	Limit Switch is OPEN	5	Flame Sense Error - Gas Valve Not Energized
5	In Lockout from False Flame	STEADY ON	Internal Control Failure
LED CODE (# of flashes)	AMBER LED STATUS / ERROR	LED CODE (# of flashes)	AMBER LED STATUS / ERROR
FAST FLASH	Flame Present With Gas Valve Off	OFF	Flame Signal is Below Required Level / No Flame Present
STEADY ON	Flame is Sensed	STEADY ON	Flame is Sensed