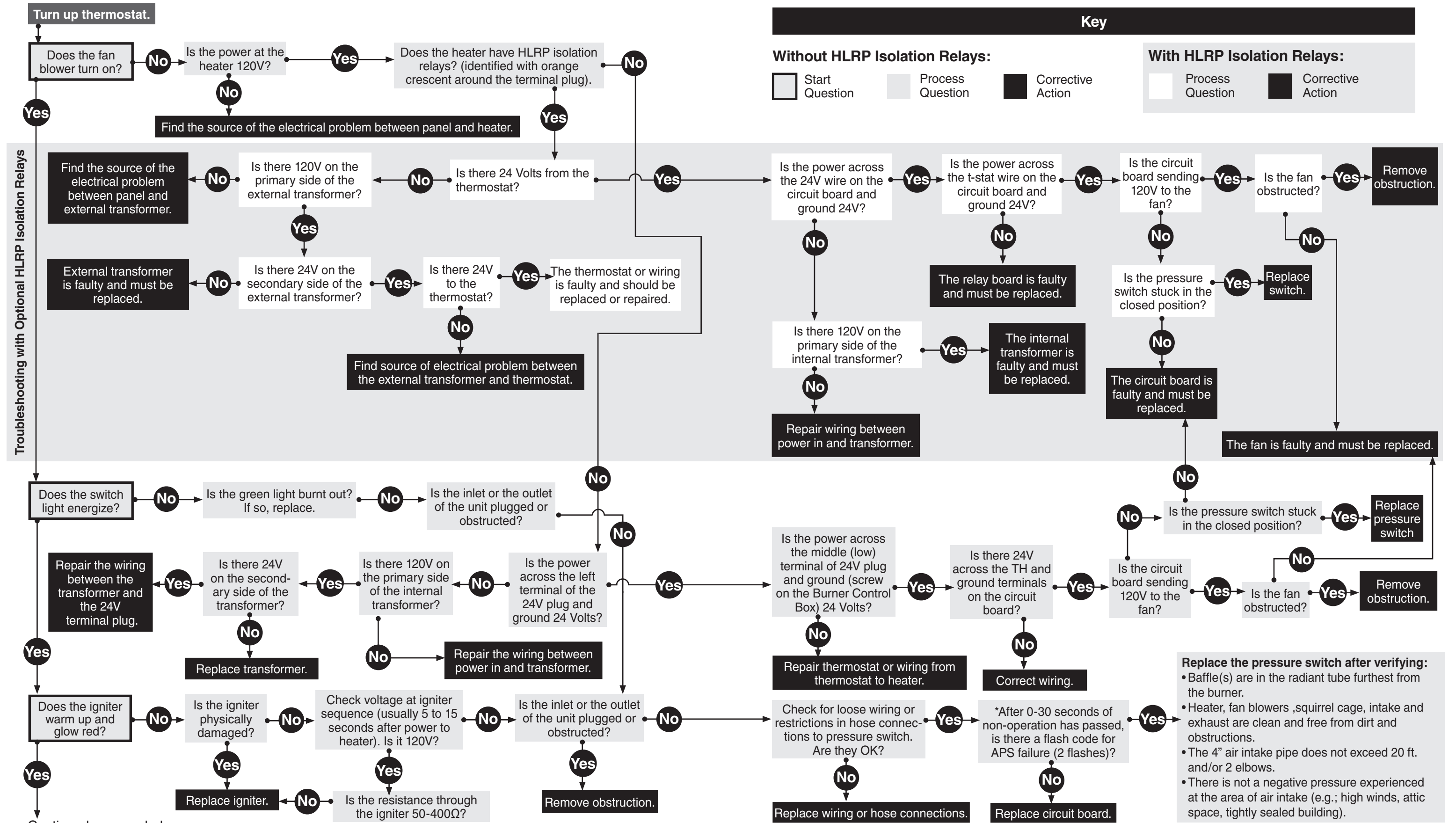


Troubleshooting Guide HL3

NOTICE Bypassing any switch is intended for testing purposes only. Do not leave switch bypassed during normal operation or the heater's built-in safety mechanisms will be compromised.



Continued on page below.

Replace the pressure switch after verifying:

- Baffle(s) are in the radiant tube furthest from the burner.
- Heater, fan blowers, squirrel cage, intake and exhaust are clean and free from dirt and obstructions.
- The 4" air intake pipe does not exceed 20 ft. and/or 2 elbows.
- There is not a negative pressure experienced at the area of air intake (e.g.; high winds, attic space, tightly sealed building).

