

# BAH SERIES SHORT WAVE

## SUBMITTAL DATA ELECTRIC INFRARED SPACE HEATERS

SUBMITTED BY: \_\_\_\_\_ DATE: \_\_\_\_\_

---

JOB TITLE: \_\_\_\_\_ CONTRACTOR: \_\_\_\_\_

ADDRESS: \_\_\_\_\_ PHONE #: \_\_\_\_\_

CITY: \_\_\_\_\_ ADDRESS: \_\_\_\_\_

PROVINCE: \_\_\_\_\_ POSTAL CODE: \_\_\_\_\_ CITY: \_\_\_\_\_

ENGINEER: \_\_\_\_\_ PHONE: \_\_\_\_\_

LOCAL REPRESENTATIVE: \_\_\_\_\_

NOTES: \_\_\_\_\_

\_\_\_\_\_

\_\_\_\_\_

\_\_\_\_\_

Qty.	Model Number	Tag	Volts	kW	Watts	Amp	Phase	BTU'S	Overall Unit Length	Width	Height	Ship Weight (Lbs.)
	BAH-18-A-05*		120	0.5	500	4.2	Single	1,700	18 in.	6.75 in.	6.75 in.	8 lbs.
	BAH-25-A-10*		120	1,000	1,000	8.3		3,400	25 in.			13 lbs.
	BAH-25-B-10*		208			4.8						
	BAH-25-C-10*		240			4.2						
	BAH-35-A-17*		120	1.7	1,750	14.0		5,900	35 in.	20 lbs.		
	BAH-35-B-17*		208			8.3						
	BAH-35-C-17*		240			7.0						
	BAH-35-G-17		480			3.6						
	BAH-45-B-25		208	2.5	2,500	12.0		8,500	45 in.	16 lbs.		
	BAH-45-C-25		240			10.0						
	BAH-45-G-25		480			5.2						
	BAH-60-B-30		208	3.0	3,000	14.0		10,200	60 in.	20 lbs.		
	BAH-60-C-30		240			12.0						
	BAH-60-G-30		480			6.3						
	BAH-60-C-40		240	4.0	4,000	16.5		13,500	60 in.	20 lbs.		
	BAH-60-G-40		480			7.0						
	BAH-60-D-40		575			8.3						

\* Certified for Brooder use.



BRANT RADIANT HEATERS LIMITED

VISIT OUR WEBSITE FOR:



34 Scott Ave.  
Paris, ON N3L 3R1

Phone: (519) 442-7823  
Toll Free: (800) 387-4778  
Fax: (519) 442-7321  
Email: sales@brantradiant.com  
Website: www.brantradiant.com

- Product Specs
- Parts Support
- Dealer Locator
- Applications
- C.A.D. Library
- Design Guidelines
- Theory of Infrared
- and More!

# BAH SPECIFICATIONS

## HEATER CONSTRUCTION

- Black powder-coat aluminized steel housing.

## LAMP ELEMENTS

- Coiled wire housed within a sealed quartz tubing.
- Porcelain end caps
- Instantaneous heat-up & cool-down.
- Quartz tube

## CONTROLS

- Field supplied.

## ELECTRICAL SUPPLY

- Voltages inputs of 120, 208, 240, 480, 575.
- Single-phase
- 500 to 4,000W per element.

## MOUNTING

- 0° to 45° adjustable brackets.

## REFLECTORS

- Highly polished aluminum.
- Wide, symmetric design.

## APPROVALS

- CSA Listed for indoor applications.
- Commercial/Industrial Approval.

## LIMITED WARRANTY

- All components - 1 year.
- Please contact the factory for further information on the terms and conditions.*

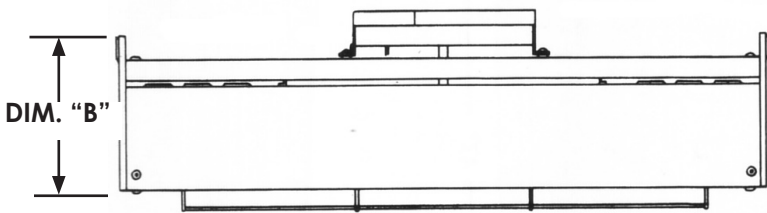
## WWW.BRANTRADIANT.COM

- Product literature.
- Aftermarket parts support.
- Representative locator.
- C.A.D. design library.
- Troubleshooting guide.

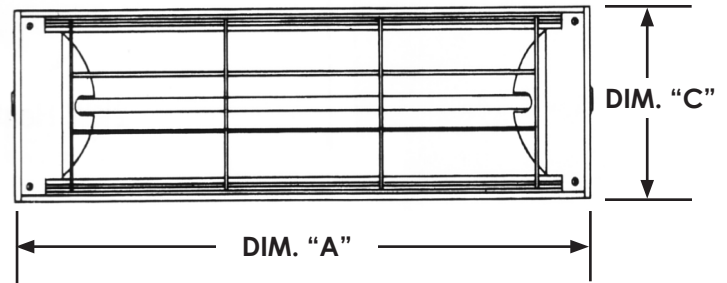
# FIELD DATA

## DIMENSIONAL INFORMATION

SIDE VIEW

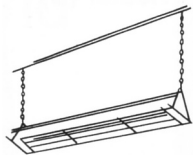


BOTTOM VIEW

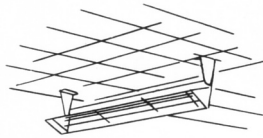


MODEL NUMBER	LAMP QTY.	DIM A INCHES	DIM B INCHES	DIM C INCHES (MM)
BAH-18	1	18 in.	6.75 in.	6.75 in.
BAH-25	1	25 in.		
BAH-35	1	35 in.		
BAH-45	1	45 in.		
BAH-60	1	60 in.		

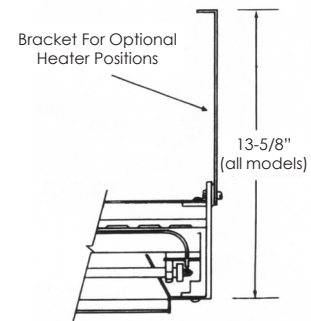
# OPTIONAL ACCESSORIES



CHAIN MOUNTING



CEILING OR WALL SURFACE MOUNTING

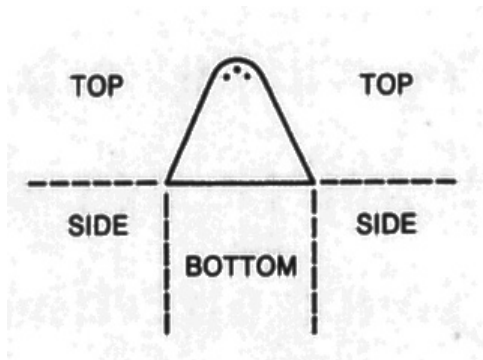


QTY.	PART NO.	DESCRIPTION	NOTES
	MB-1	Mounting Brackets	
	THCS	5 ft. Chain Set	

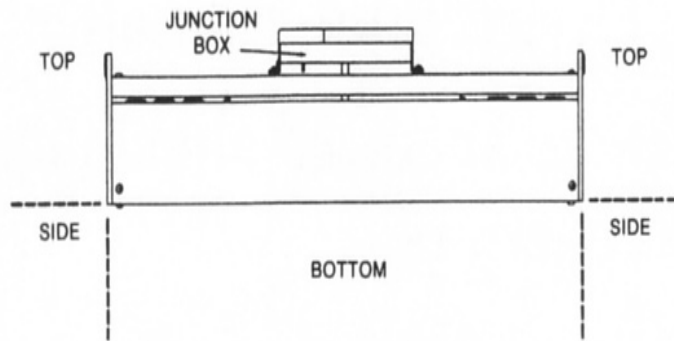
# CLEARANCES TO COMBUSTIBLES (IN.)

MODEL NO.	LAMP QTY.	VOLTS	WATTS	BTU/H	MOUNTING ANGLE	SIDES	TOP	BELOW
BAH-18	1	120	500	1,700	0°	18	12	24
BAH-25	1	120	1,000	3,400	1°-45°	18	12	24
		208						
		240						
BAH-35	1	120	1,750	5,900	0°	18	12	24
		208						
		240						
		480						
BAH-45	1	208	2,500	8,500	0°	18	12	24
		240						
		480						
BAH-60	1	208	3,000	10,200	0°	18	12	24
		240						
		480						
	1	240	4,000	13,500	0°	18	12	24
		480						
		575						

Clearances to combustibles **must** be maintained. Clearances are measured from the radiant surface and/or heater bottom to the nearest combustible surface. It is essential that the position and the angle of the installation avoids any possibility of curtains, draperies or other flammable material coming in contact with the heater.



**TOP**  
12 inches



**SIDES**  
18 inches

**BOTTOM**  
24 inches

# WRITTEN SPECIFICATIONS

## HEATER PARAMETER/SPECIFICATIONS

- Medium wave electric infrared heaters shall be furnished and installed in accordance with governing codes and as shown per drawing(s) provided. Short wave electric heaters shall be **RE-VERBER-RAY BAH SERIES**, as manufactured by Brant Radiant Heaters Ltd, Paris, ON N3L 3R1.
- Medium wave infrared heaters shall be Designed Certified by CSA and bear the CSA Seal of Certification for the United States and Canada.
- The supplier shall provide manufacturer's published warranty covering all components utilized in the heater control assembly for a period of one (1) year.
- The supplier shall furnish the owner/contractor with \_\_\_\_\_ copies of the engineering specification form, showing physical dimensions, installation detail, recommendations, wiring diagrams, and spare parts list.
- An Installation, Operation, Maintenance and Parts Manual (IOPM) shall be supplied with each heater.
- The manufacturer shall have a minimum of 50 years of manufacturing experience producing infrared heaters.
- Medium wave infrared heaters must be CSA Listed to operate at the designated rating of \_\_\_\_\_kW/h.
- Electric medium wave infrared space heaters shall be supplied and installed in accordance with the manufacturers certified installation instructions and governing codes, as shown per building drawing(s) \_\_\_\_\_. Heaters shall be BAH Series, model numbers, input ranges in Watts.

## BAH SERIES HEATER CONTROLS

- Field supply applicable controls.
- Heaters shall operate in given voltages:

<u>Volt</u>	<u>Phase</u>	<u>Hertz</u>
120V	1ph	50/60
208V	1ph	50/60
240V	1ph	50/60
480V	1ph	50/60
575V	1ph	50/60

- Heaters shall operate in given wattage inputs of 500 to 4,000.

## MEDIUM WAVE INFRARED HEATER CONSTRUCTION

- The heater housing shall be constructed of either black powder-coated aluminized steel.
- The heater reflector shall be constructed of highly polished aluminum with a multi-faceted design.
- The emitter tubing shall be argon filled evacuated blown quartz with high temperature ceramic end caps.
- The quartz tubing shall be opaque in color allowing maximum radiant heat transfer.
- The protective grill be bright zinc coated.
- Optional factory supplied mounting brackets shall accommodate for sidewall or ceiling mounting.