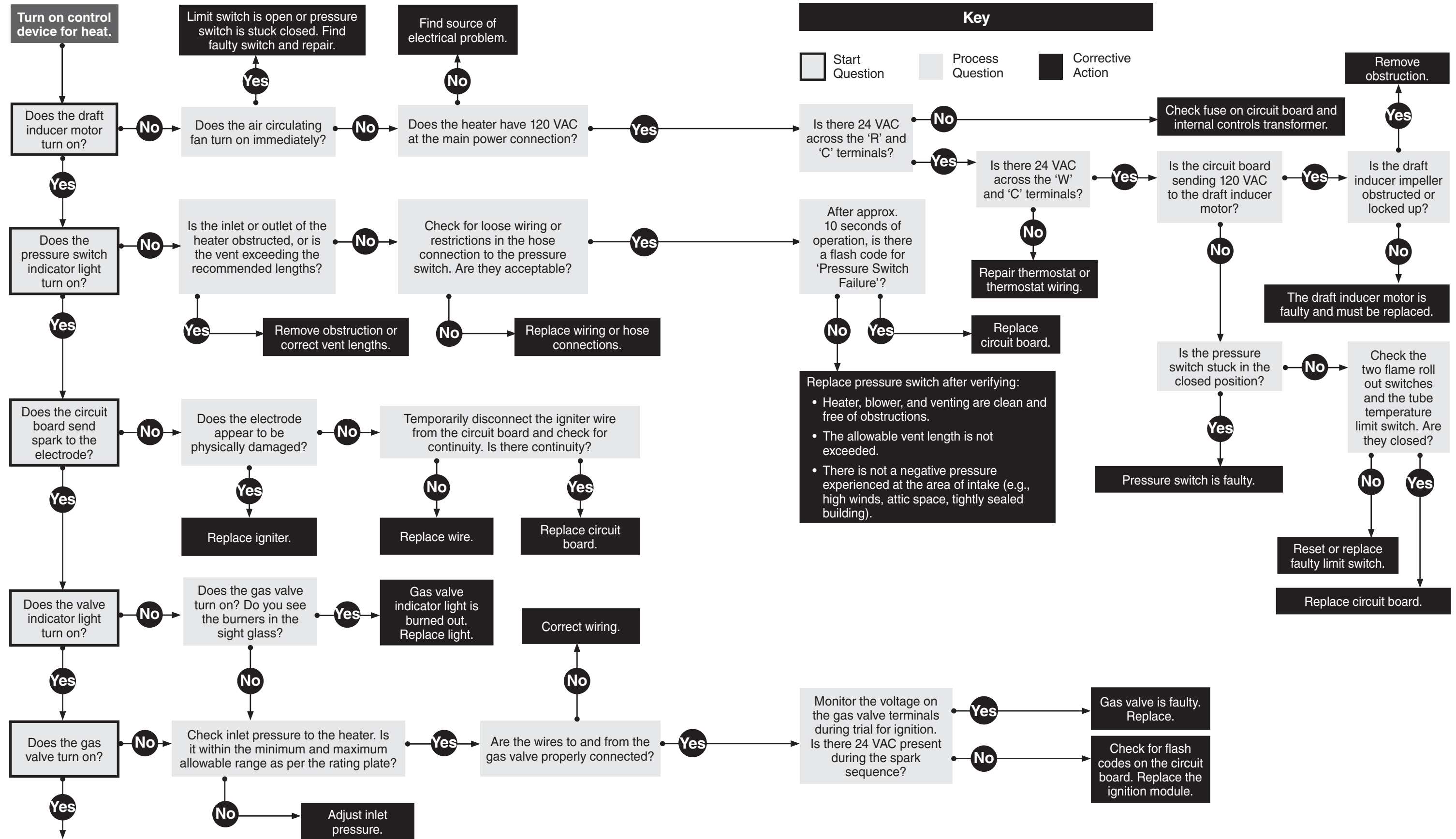
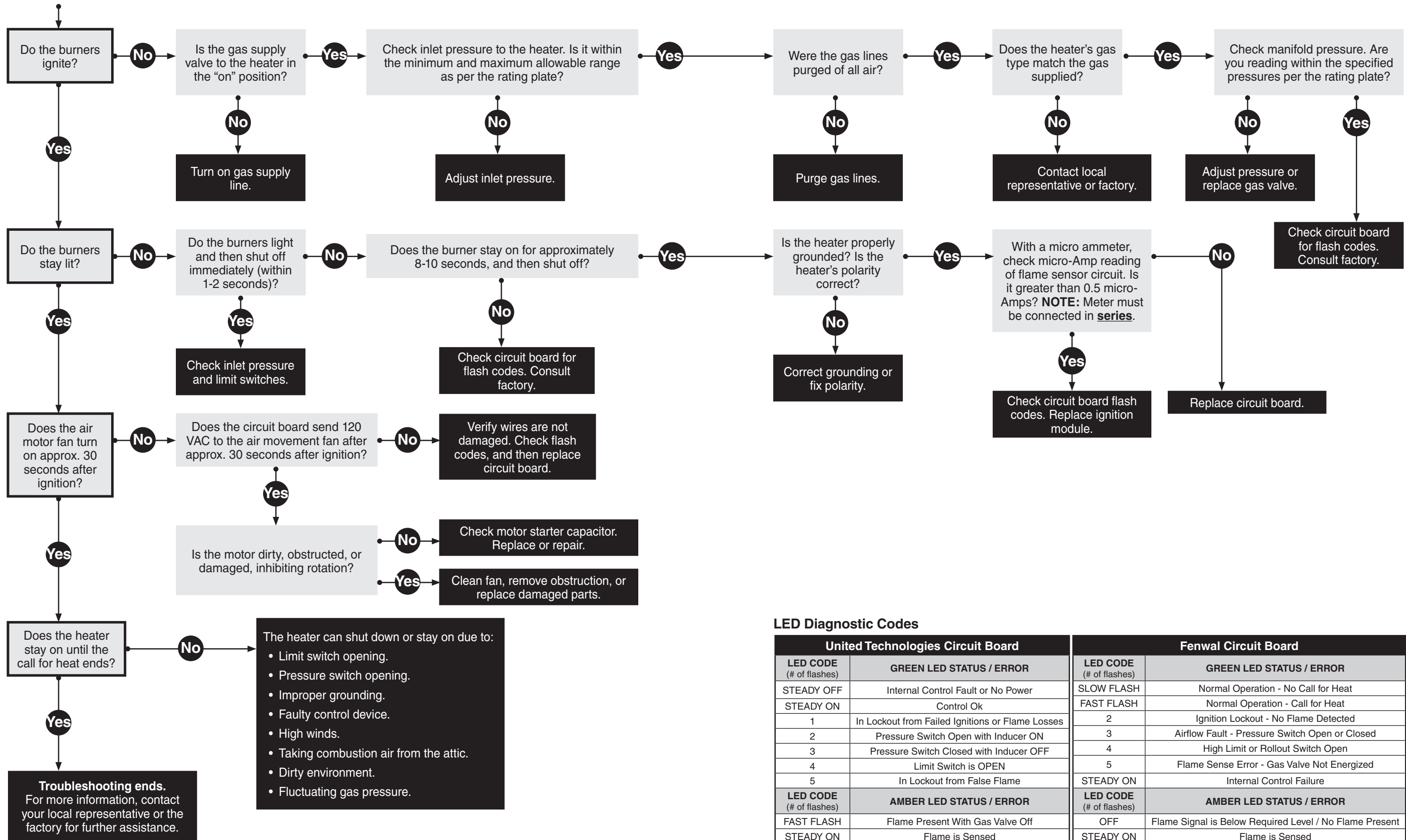


Troubleshooting Guide UH

NOTICE Bypassing any switch is intended for testing purposes only. Do not leave switch bypassed during normal operation or the heater's built-in safety mechanisms will be compromised.





LED Diagnostic Codes

| United Technologies Circuit Board | | Fenwal Circuit Board | |
|-----------------------------------|--|-------------------------|---|
| LED CODE (# of flashes) | GREEN LED STATUS / ERROR | LED CODE (# of flashes) | GREEN LED STATUS / ERROR |
| STEADY OFF | Internal Control Fault or No Power | SLOW FLASH | Normal Operation - No Call for Heat |
| STEADY ON | Control Ok | FAST FLASH | Normal Operation - Call for Heat |
| 1 | In Lockout from Failed Ignitions or Flame Losses | 2 | Ignition Lockout - No Flame Detected |
| 2 | Pressure Switch Open with Inducer ON | 3 | Airflow Fault - Pressure Switch Open or Closed |
| 3 | Pressure Switch Closed with Inducer OFF | 4 | High Limit or Rollout Switch Open |
| 4 | Limit Switch is OPEN | 5 | Flame Sense Error - Gas Valve Not Energized |
| 5 | In Lockout from False Flame | STEADY ON | Internal Control Failure |
| LED CODE (# of flashes) | AMBER LED STATUS / ERROR | LED CODE (# of flashes) | AMBER LED STATUS / ERROR |
| FAST FLASH | Flame Present With Gas Valve Off | OFF | Flame Signal is Below Required Level / No Flame Present |
| STEADY ON | Flame is Sensed | STEADY ON | Flame is Sensed |