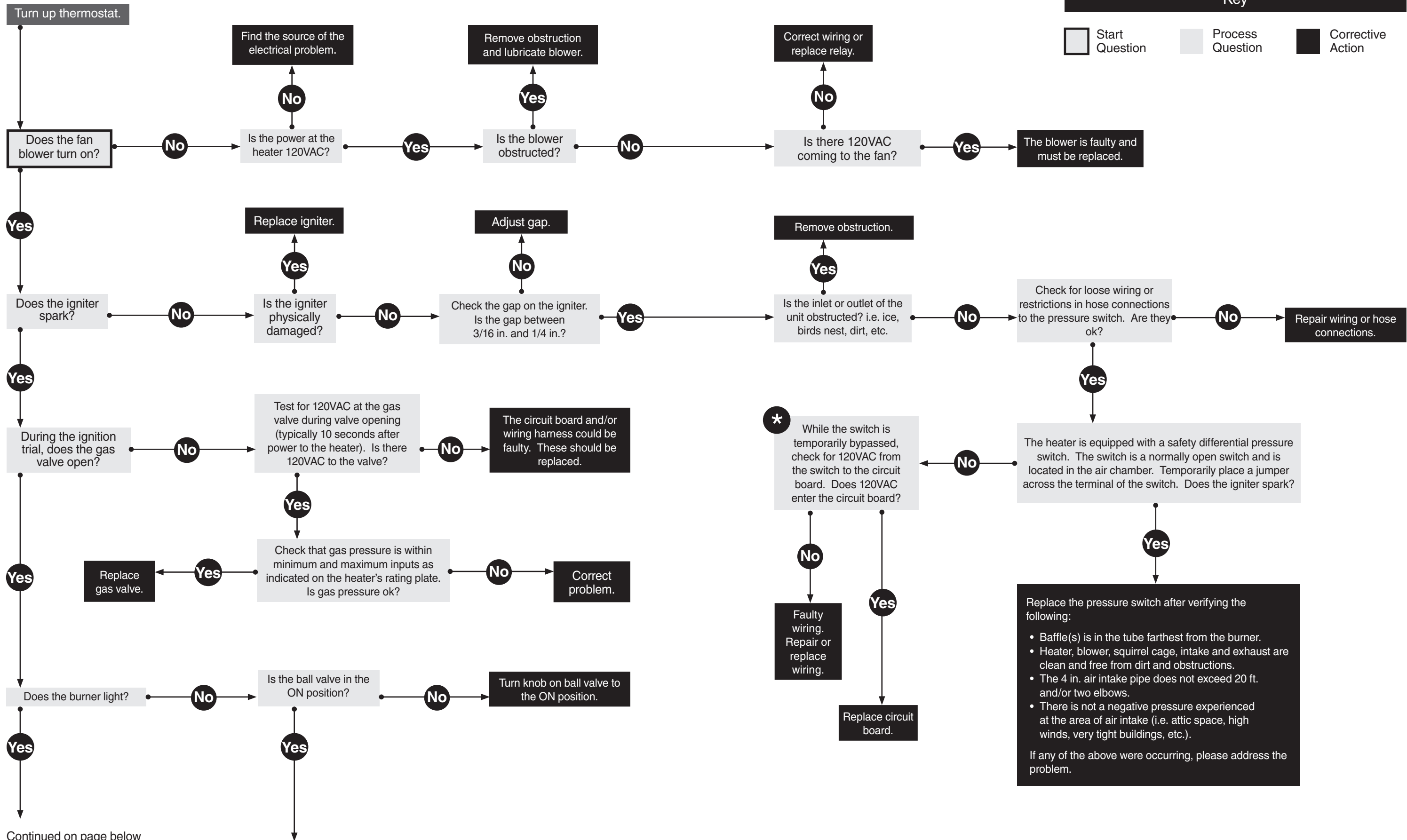
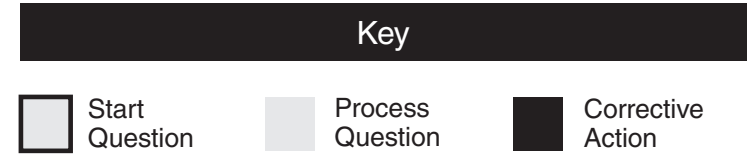


Troubleshooting Guide DES3

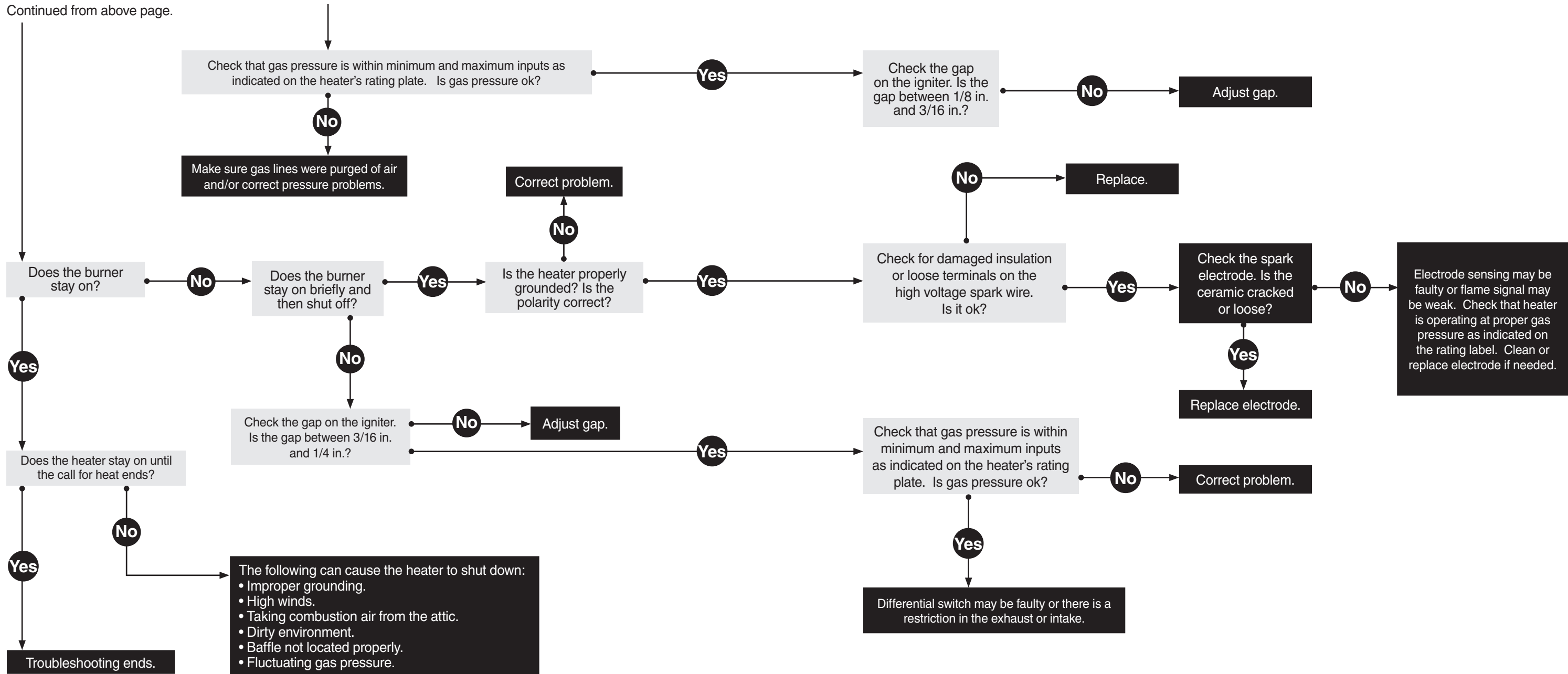
*** NOTICE**

Bypassing any switch is intended for testing purposes only. Do not leave switch bypassed during normal operation or the heater's built-in safety mechanisms will be compromised.



Continued on page below

Continued from above page.



Flame Current Check: Single Spark & Sense

To measure flame current, disconnect input voltage, then insert a 0-50 μA DC meter and capacitor in series with the spark electrode as shown below. Reconnect input voltage and initiate call for heat. After sparking is complete and flame is established, meter should read 1.0 μA or higher while flame is established. If meter reads below "0" on the scale, meter leads are reversed. Disconnect power and reconnect meter lead for proper polarity.

